



Accommodates  
**BARIATRIC** Patients

# Urology C-Arm Table 800

*Designed for image-guided urologic procedures*



## FEATURES

- Widely positioned base legs for optimal surgeon access to patient
- Foot controller and motorized tabletop enable hands-free adjustment during procedures
- Five-axis motorized tabletop positioning – X-Y, up/down, Trendelenburg and lateral roll
- Motorized Fowler Positioning – Industry exclusive, 0° to 80°
- 500 lb patient capacity
- Radiolucent extension adds versatility for general surgery, pain and orthopedic use
- Precision Electric Motor Actuators – No oil or hydraulics
- Low Profile Base – For unrestricted C-Arm movement
- Accessory Rails
- AC and Battery Power – Standard



*Radiolucent extension converts the Urology Table into a general purpose Surgical Table.*

## DESCRIPTION

The Urology C-Arm Table 800 is an ideal choice for image-guided procedures. The narrow Fiberesin™ tabletop is cantilevered to accommodate portable or ceiling suspended C-Arms. Radiolucent areas are free of cross members, allowing full fluoroscopic visualization and unobstructed C-Arm positioning. Functional design provides complete access while minimizing radiation exposure to clinicians.

### Power Motions

The Urology C-Arm Table features motorized actuation of height, X-Y, lateral roll and Trendelenburg motions of the tabletop. The hand-held and foot-operated controllers can be positioned for access from any point around the table and ensure quick and safe tabletop positioning during any phase of a procedure. The “Level” feature returns the table to 0° tilt and 0° lateral roll, bringing the table quickly to a level position. Both controllers can be used for motorized X-Y positioning of the tabletop and feature proportional speed control.

### More Adjustments and Features

The table back adjusts with a simple touch-handle lock/unlock mechanism to an 80° angle with incremental stops at 20°, 30°, 40°, 50°, 60°, 70° and 80°.

The table comes equipped with a lightweight, non-imaging patient transfer extension and a radiolucent extension. The radiolucent extension provides capability for vascular, cardiac and other general C-Arm applications. Select from knee crutches or the PAL stirrups, arm boards or drain systems, the choice is yours – configure to your exact specifications.

Both AC and battery power are standard. When operating on battery, there are no power cords to catch on feet or block table wheels. Battery charging can be accomplished during off hours by plugging in the AC adapter cord. An optional battery, with separate charging unit, provides continuous cordless operation.

# Urology C-Arm Table 800



Wide-leg stance, compact foot controller and motorized tabletop allow for optimal access.

## SPECIFICATIONS

### Dimensions:

- Dimensions: 84.5" l x 25.5" w (214.6 x 64.8 cm) with OR accessory rails
- Tabletop: 53" l x 21" w (134.6 x 53.3 cm); 84" l (213.4 cm) with extension
- Lightweight Extension (for patient transfer only, not for imaging): 26.5" l x 21" w (67.3 x 53.3 cm)
- Radiolucent Extension: 31" l x 25.5" w (78.7 x 64.8 cm) with OR accessory rails
- Radiolucent Area: 54" l x 17.5" w (137.2 x 44.5 cm)
- Tabletop Material: Three Fiberesin™ sections – each with individual 2" mattress
- Mattress: Individual, seamless, 2" thick (5 cm), one for each section

### Motions:

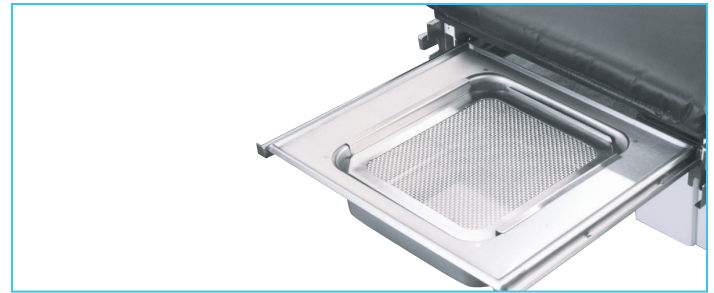
- Tabletop Y Motion (side to side): 10" (25.4 cm)
- Tabletop X Motion (head-to-toe): 20" (51 cm)
- Trendelenburg: 0° to 20°
- Reverse Trendelenburg: 0° to 20°
- Lateral Roll: 0° to 20°
- Height Adjustable: 34" to 43.5" (86.4 to 110.5 cm)
- Fowler Positioning: Adjusts from 0° to 80° with touch handle lock/unlock

### Optional:

- Patient Restraints: Two body straps, two ankle straps
- Finish: Powder coat
- Patient Capacity:
  - In urologic position: 500 lb (227 kg)
  - In use with radiolucent extension: 400 lb (181.4 kg)
  - Weight tested to four times the patient load rating
- Shipping Weight: 903 lb (409.6 kg)

### Controls:

- Hand Control and Foot Control: activates all motions
- Accessory Rails: Standard OR accessory rails, 1.125" x .375" (2.86 x .95 cm)
- Power: 115 VAC or 230 VAC and battery. Battery automatically charges when table is plugged in. An additional battery can be charged with optional wall-mounted charger.
- Warranty: Two years parts and labor
- Certifications: ANSI/AAMI ES60601-1:2005 +C1 (2009) +A1 (2012) +A2 (2010); CAN/CSA C22.2 No: 60601-1:14; CAN/CSA-C22.2 NO.60601-2-46:12; IEC 60601-1-2-46:2016.
- CDRH registered and FDA Device Listed



Choose from a stainless steel drain pan with a wire mesh splash screen or a plastic drain-bag holder for disposable drain bag.

## ORDERING INFORMATION

058-800 Table, Urology C-Arm - 800, 115 VAC  
058-805 Table, Urology C-Arm - 800, 230 VAC

### Optional:

058-862 Stirrups, PAL with boot pad (pair)  
056-853 Crutch, Knee, Simplicity, (pair)  
056-851 Drain Bag Frame  
058-860 Drain Pan, Stainless Steel  
058-863 Arm Board, Dura Board with pad (pair)  
058-865 Arm Board, Standard (pair)  
056-463 Grid, X-ray  
058-866 Cassette Tray, 11" x 14"  
056-850 IV Pole, rail mounted  
056-862 Battery and Wall Charging Unit, 115 VAC  
056-863 Battery and Wall Charging Unit, 230 VAC  
056-802 Bellows Skirt, disposable plastic, 250/roll  
046-275 Dispenser, Disposable Protective Roll  
For 056-802 Bellows Skirt. Wall mounted.

### Replacement:

056-460 Hose, Drain, Urology, 40/cs  
056-857 Bags, Drain, 10/pkg

BIO-231 - 07/2021

Copyright © 2021 Mirion Technologies, Inc. or its affiliates. All rights reserved. Mirion, the Mirion logo, and other trade names of Mirion products listed herein are registered trademarks or trademarks of Mirion Technologies, Inc. or its affiliates in the United States and other countries. Third party trademarks mentioned are the property of their respective owners.

**BIODEX**  
Part of Mirion Technologies

[www.biodex.com](http://www.biodex.com)  
[www.mirion.com](http://www.mirion.com)