

# CLEAR-LEAD™ PERSONAL MOBILE BARRIER

---

ASSEMBLY INSTRUCTIONS

042-583



## BIODEX

Biodex Medical Systems, Inc.

20 Ramsey Road, Shirley, New York, 11967-4704

Tel: 800-224-6339 (Int'l 631-924-9000),

Fax: 631-924-9241 Email: [info@biodex.com](mailto:info@biodex.com), [www.biodex.com](http://www.biodex.com)

---

This manual covers assembly instruction for the following product:

042-583      Barrier, Mobile, Clear-Lead™, Hour-Glass Window  
0.5 mm LE Window size 48" h x 24" w  
(122 x 61 cm)

This Clear-Lead Mobile Barrier is intended to supply a minimum of 0.5mm lead equivalence radiation protection.

## Assembly Instructions:

**NOTE:** Do not remove the protective paper before completing assembly to avoid accidental scratches.

1. Unpack and locate:
  - a. One shield sub-assembly
  - b. Two leg sub-assemblies with casters
  - c. One bag containing the parts numbered 3-5 on schematic drawing (See Figure 2.)
2. Lay shield sub-assembly on a flat surface (e.g., table) with the bottom extending over the edge. (See Figure 1.)

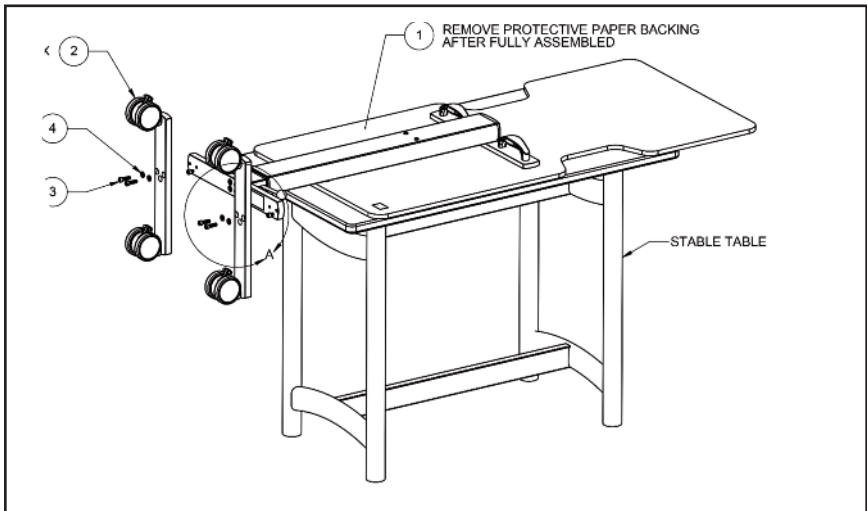


Figure 1.

---

3. Align 3rd bolt on each leg assembly with protruding, pre-installed screw on barrier sub-assembly. Using provided ¼" Allen key - attach leg sub-assemblies from bottom with provided hex socket cap screws and washers. Do not fully tighten.
4. Apply 2-3 drops of Loctite to threads of flat-head screws, and using 3/16" Allen key - insert flat-head screws from both sides as shown on the drawing.
5. Fully tighten the four flat-head screws.
6. Now go back and fully tighten all four hex socket cap screws using the provided ¼" Allen key.
7. Place the assembled barrier upright on its casters and carefully remove the masking paper from both sides of the window.

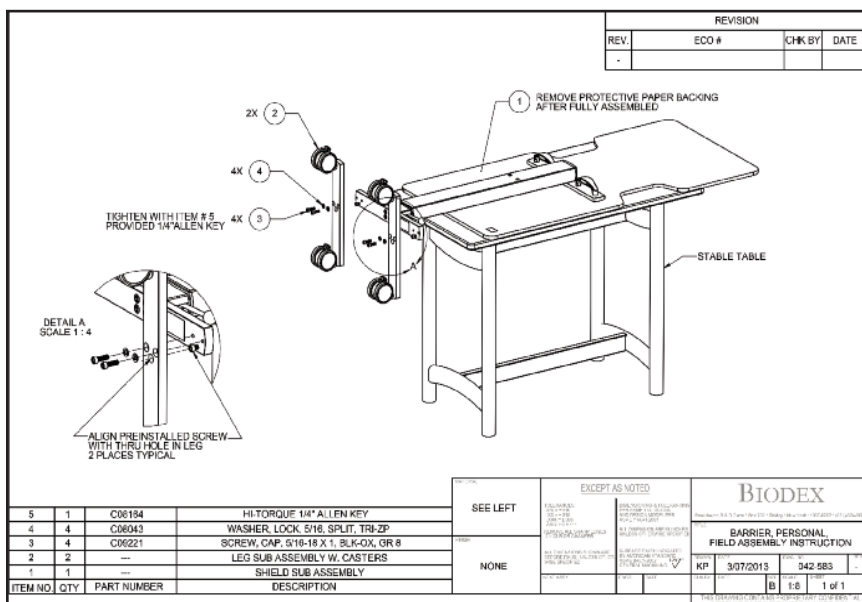


Figure 2.

# Routine Care and Cleaning Instructions

1. Wipe Clear-Lead panel with a soft cloth, using only water or ethanol, if necessary. Do not leave Clear-Lead panel wet; dry panel with a soft cloth.
2. Do not use abrasives on window panel.
3. Scratches can be removed by using a quality acrylic polish such as Novus Polish #2.



**CAUTION:** Avoid tipping barrier more than 10 degrees from perpendicular as it may fall over.



**ATTENTION:** Éviter le basculement de barrière plus de 10 degrés de perpendiculaire comme il peut tomber.



**CAUTION:** Forcing the barrier up or down without releasing the foot pedal may result in permanent damage.



**ATTENTION:** Forcer la barrière vers le haut ou vers le bas sans relâcher la pédale peut entraîner des dommages permanents.

## Authorized European Community Representative:



Emergo Europe  
Molenstraat 15  
2513 BH, The Hague  
The Netherlands

# BIODEX

Biodex Medical Systems, Inc.

20 Ramsey Road, Shirley, New York, 11967-4704

Tel: 800-224-6339 (Int'l 631-924-9000),

Fax: 631-924-9241 Email: [info@biodex.com](mailto:info@biodex.com), [www.biodex.com](http://www.biodex.com)