

The Clinical Advantage™

# CLEAR-LEAD™

## MOBILE BARRIERS AND WINDOWS

For X-Ray and Nuclear Medicine



“The *Clear* Choice Over Lead Glass”

**BIODEX**

www.biodex.com  
**1-800-224-6339**

Int'l 631-924-9000

# Clear-Lead™ Mobile Barriers

## CLEAR-LEAD™ MOBILE X-RAY BARRIERS

*Ionizing Radiation Protection - Clear-Lead™ Mobile Barriers offer large, durable and shatter resistant protection wherever it's needed.*



- Meets all infection-control criteria
- Sleek design is easy to clean
- Durable and shatter resistant protection
- Effortless maneuverability
- 0.5 mm lead equivalency window
- 0.8 mm lead opaque panel
- Superior stability

Clear-Lead™ acrylic mobile x-ray barriers are designed for use around any imaging procedures using ionizing radiation, e.g., fluoroscopy, x-ray, CT, mammography.

The greatest advantage of these barriers over others on the market is the time they save behind the scenes. Their sleek design exposes no hardware, nooks or crannies while the opaque section of the shield is covered with plastic laminate – the result, a smooth, easy-to-clean finish.

Grab-handle edges and large casters make them effortless to maneuver. Clear-Lead™ Mobile Barriers offer large, durable and shatter resistant protection wherever it's needed.

### SPECIFICATIONS:

*042-580 Clear-Lead Mobile Barrier, Standard Window*

#### Dimensions:

- Overall Dimensions: 30" w x 75" h (76 x 191 cm)
- Window: 30" w x 24" h (76 x 61 cm)
- Opaque Panel: 30" w x 48" h (76 x 122 cm)
- Shielding Area: 30" w x 72" h (76 x 183 cm)

#### Shielding:

- Window: 0.5 mm lead equivalency
- Opaque Panel: 0.8 mm lead

Leg Depth: 10.5" (26.7 cm)

Casters: Four hospital grade; two locking, two non-locking

Weight: 102 lb (46.5 kg)

Warranty: One year parts and labor

*042-582 Clear-Lead Mobile Barrier, Full Window*

#### Dimensions:

- Overall Dimensions: 30" w x 75" h (76 x 191 cm)
- Window: 30" w x 54.5" h (76 x 138.4 cm)
- Opaque Panel: 30" w x 17.5" h (76 x 44.5 cm)
- Shielding Area: 30" w x 72" h (76 x 183 cm)

#### Shielding:

- Window: 0.5 mm lead equivalency
- Opaque Panel: 0.8 mm lead

Leg Depth: 10.5" (26.7 cm)

Casters: Four hospital grade; two locking, two non-locking

Weight: 98 lb (44.5 kg)

Warranty: One year parts and labor

**042-580** Barrier, Mobile, Clear-Lead, Standard Window  
*For ionizing radiation, 0.5 mm LE  
Window size 30" w x 24" h (76 x 61 cm)*

**042-582** Barrier, Mobile, Clear-Lead, Full Window  
*For ionizing radiation, 0.5 mm LE  
Window size 30" w x 54.5" h (76 x 138.4 cm)*

[www.biodes.com/clear-lead](http://www.biodes.com/clear-lead)

## CLEAR-LEAD™ PERSONAL MOBILE BARRIER

*Contoured design for functional radiation protection*



The unique hourglass contour of the Personal Mobile Barrier provides “hands-on” patient access while providing radiation protection (0.5 mm LE) where it’s needed.

This versatile, lightweight barrier offers the distinct convenience of height adjustability (10") to protect the user, whether seated or standing. This feature is an essential advantage for all urologists, anesthesiologists, pain-care physicians, x-ray technologists and more.

Constructed of Clear-Lead™ acrylic, the window measures 24" wide x 48" high with anatomically positioned cutouts for the user’s arms to maintain continuous hands-on contact with the patient while maximizing protection.

Featuring an easy-roll, four-caster base and two grip handles, the lightweight barrier (51 lb) is easy to maneuver, and positions flush to the table for total patient access.



### SPECIFICATIONS:

#### Dimensions:

**Overall:** 24" w x 72" h (61 x 183 cm)

**Height Adjustable:** 62" – 72" (157 – 183 cm)

**Hourglass shape window:** 24" w x 48" h (61 x 122 cm), cutouts – 4" deep x 10.3" h (10 x 26 cm)

**Shielding:** Clear-Lead acrylic with 0.5 mm LE

**Base:** Stable, heavy duty, 4" (10 cm) locking caster base with a 17.4" x 18" (44 x 46 cm) footprint

**Weight:** 51 lb (23 kg)

**Maneuverability:** Telescoping up/down feature allows 10" (25.4 cm) of height adjustability

**Warranty:** one year parts and labor

**042-583** Barrier, Mobile, Clear-Lead™, Hourglass Window  
For ionizing radiation,  
0.5 mm LE Window size  
24" w x 48" h (61 x 122 cm)

## CLEAR-LEAD™ NUCLEAR MEDICINE MOBILE BARRIER

*Protection against patient-emitting radiation, a must have for every nuclear medicine department*



- 1.0 mm lead equivalent protection
- Features 23.5" x 46.5" Clear-Lead™ viewing area
- Lightweight, with hand-shaped edges for easy maneuvering and cleaning.

Ideal for use during nuclear medicine procedures, the Clear-Lead™ Nuclear Medicine Mobile Barrier provides complete protection against patient-emitted radiation. Safe, durable and shatter resistant, the Clear-Lead window is a transparent acrylic containing 30% lead by weight.

With its grab-handle edges and large casters, the Clear-Lead™ mobile barrier is effortless to maneuver offering protection wherever it’s needed.

### SPECIFICATIONS:

#### Dimensions:

**Overall Dimensions:** 49.5" w x 61.1" h (126 x 155 cm)

**Window:** 48" w x 23.5" h (122 x 60 cm)

**Opaque Panel:** 48" w x 32.5" h (122 x 82.5 cm)

**Shielded Area:** 48" w x 56" h (122 x 142 cm)

**Window:** 1.0 mm lead equivalency

**Opaque Panel:** 1.1 mm lead

**Leg Depth:** 10.5" (26.7 cm)

**Casters:** Four hospital grade, locking

**Weight:** 161 lb (73.2 kg)

**Warranty:** one year parts and labor

**042-585** Barrier, Mobile, Clear-Lead Nuclear Medicine, Wide Window  
For patient-emitting radiation, 1.0 mm LE Window size 48" w x 23.5" h (122 x 60 cm)

**BIODEX**



# Clear-Lead™ Windows

*The safe alternative for radiation shielding windows.*

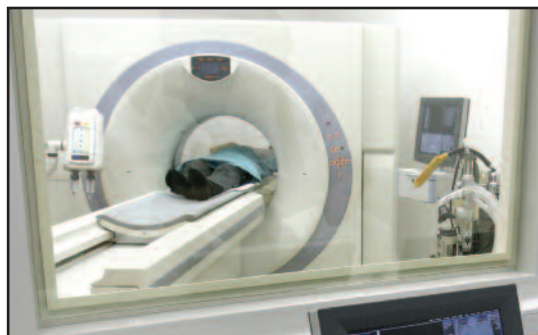


*Clear-Lead™ Windows offer large, durable and shatter resistant radiation protection wherever it's needed.*

- Safe, durable, shatter resistant
- Effective radiation protection, 30% lead weight, with superb light transmission
- Easy and safe to handle, cut and fabricate
- The clear choice over lead glass
- Radiation protection with an unobstructed view
- Ease of handling eliminates high construction costs
- Stock sizes available

Clear-Lead is the shatter resistant choice when a large undistorted radiation protection window is necessary. Safe to work with, the window panel can easily be cut with commonly used tools and fit to standard lead-lined window frames.

Clear-Lead is a unique, versatile, transparent acrylic containing 30% lead by weight. The windows offer effective radiation protection with superb light transmission. Biodex offers the Clear-Lead Windows in six different thicknesses; the amount of lead equivalent radiation protection is relative to the thickness. Biodex stocks the most popular sizes and thicknesses. Included with each window are comprehensive cutting instructions.



*Ideal for PET CT Suite.*

#### STANDARD SIZES AVAILABLE:

(height x width x thickness x lead equivalence)

- 042-574** Window, Clear-Lead  
24" x 24" x 22 mm thick, 1.0 mm LE
- 042-575** Window, Clear-Lead  
24" x 24" x 35 mm thick, 1.5 mm LE
- 042-576** Window, Clear-Lead  
24" x 48" x 35 mm thick, 1.5 mm LE
- 042-577** Window, Clear-Lead  
36" x 48" x 35 mm thick, 1.5 mm LE
- 042-578** Window, Clear-Lead  
48" x 72" x 35 mm thick, 1.5 mm LE
- 042-579** Window, Clear-Lead  
36" x 84" x 35 mm thick, 1.5 mm LE

Warranty: One year

**Call for pricing**

## BIODEX

Biodex Medical Systems, Inc.

20 Ramsey Road, Shirley, New York, 11967-4704, Tel: 800-224-6339 (Int'l 631-924-9000), Fax: 631-924-9241, Email: info@biodex.com, www.biodex.com